

# 2009-2010 Charter and Contract Schools Performance Report

*Office of New Schools*



**Office of New Schools - Chicago Public Schools  
2009-10 Performance Report**

<b>School:</b>	Chicago International Charter School - Avalon/South Shore Campus	<b>Academic Status:</b>	Meeting Standards
<b>Address:</b>	1501 East 83rd Place	<b>Accountability Version:</b>	D
<b>Phone:</b>	773.721.0858	<b>Year Opened:</b>	2005
<b>Grades Served:</b>	K-8th	<b>Term of Agreement:</b>	2007-2012
		<b>Student Enrollment:</b>	420

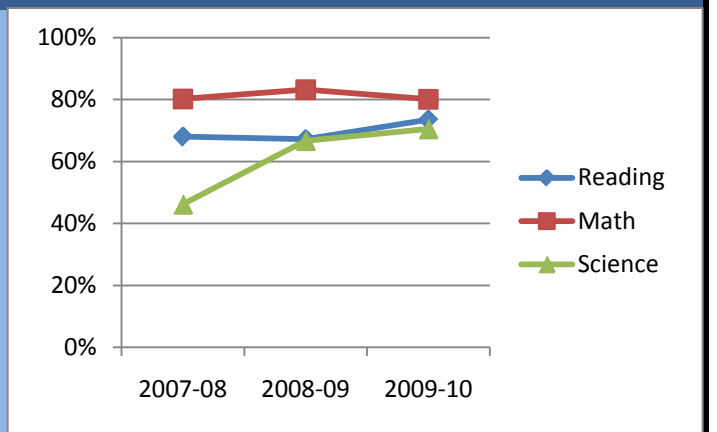
**School Mission:** CICS's mission is to provide, through innovation and choice, an attractive and rigorous college-preparatory education that meets the needs of today's student.

**Demographic Information**

	School	District Average
<b>Student Ethnicity</b>		
African American	100.0%	45.1%
Hispanic	0.0%	41.9%
White	0.0%	9.2%
Asian/Pacific Islander	0.0%	3.6%
Other	0.0%	0.2%
<b>Other Demographics</b>		
Low-income rate	90.0%	86.9%
Limited English proficiency	0.2%	12.5%
Special Education	5.7%	12.0%
Percentage of Students from Neighborhood	36.7%	

**Test Scores Over Time**

ISAT	2007-08	2008-09	2009-10
<b>Reading</b>	68.0%	67.2%	73.5%
<b>Math</b>	80.2%	83.2%	80.1%
<b>Science</b>	46.2%	66.7%	70.5%



Absolute and Relative Student Performance				
Indicator	Performance	Absolute Rating	Comparison	
			School Average	Difference
Elementary School				
ISAT Reading: Percent Meeting/Exceeding Standards	73.5%	High	57.5%	16.0%
ISAT Reading: Change	11.0%	High		
ISAT Math: Percent Meeting/Exceeding Standards	80.1%	High	64.1%	16.0%
ISAT Math: Change	2.5%	High		
ISAT Science: Percent Meeting/Exceeding Standards	70.5%	High	51.6%	18.9%
ISAT Science: Change	14.1%	High		
ISAT Composite: Percent Meeting/Exceeding Standards	76.0%	High	59.5%	16.5%
ISAT Composite: Change	7.7%	High	1.4%	6.3%
Attendance Rate	96.0%	Middle	93.0%	3.0%
Transfer-out Rate	2.1%	High	14.3%	12.2%

**Office of New Schools - Chicago Public Schools  
2009-10 Performance Report**

<b>School:</b> Chicago International Charter School - Bucktown Campus	<b>Academic Status:</b> Meeting Standards
<b>Address:</b> 2235 North Hamilton Avenue	<b>Accountability Version:</b> D
<b>Phone:</b> 773.645.3321	<b>Year Opened:</b> 1997
<b>Grades Served:</b> K-8th	<b>Term of Agreement:</b> 2007-2012
	<b>Student Enrollment:</b> 628

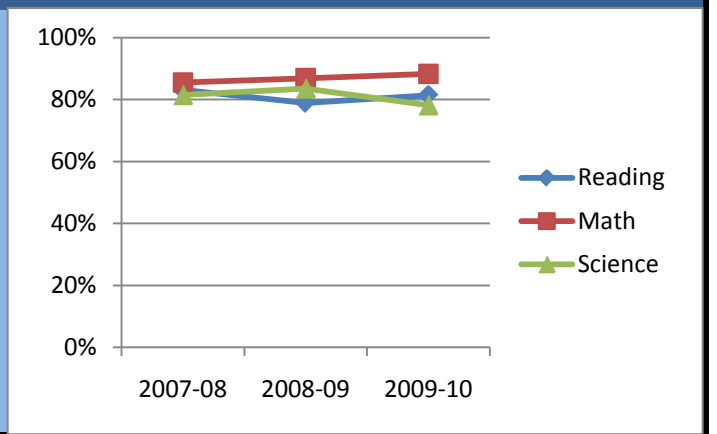
**School Mission:** CICS's mission is to provide, through innovation and choice, an attractive and rigorous college-preparatory education that meets the needs of today's student.

**Demographic Information**

Student Ethnicity	School	District Average
African American	21.7%	45.1%
Hispanic	71.0%	41.9%
White	6.2%	9.2%
Asian/Pacific Islander	1.1%	3.6%
Other	0.0%	0.2%
<b>Other Demographics</b>		
Low-income rate	79.6%	86.9%
Limited English proficiency	9.9%	12.5%
Special Education	9.6%	12.0%
Percentage of Students from Neighborhood	48.4%	

**Test Scores Over Time**

ISAT	2007-08	2008-09	2009-10
<b>Reading</b>	83.1%	78.9%	81.4%
<b>Math</b>	85.5%	86.9%	88.3%
<b>Science</b>	81.5%	83.6%	78.2%



Absolute and Relative Student Performance				
Indicator	Performance	Absolute Rating	Comparison	
			School Average	Difference
Elementary School				
ISAT Reading: Percent Meeting/Exceeding Standards	81.4%	High	66.3%	15.1%
ISAT Reading: Change	4.1%	High		
ISAT Math: Percent Meeting/Exceeding Standards	88.3%	High	76.3%	12.0%
ISAT Math: Change	3.0%	High		
ISAT Science: Percent Meeting/Exceeding Standards	78.2%	High	66.8%	11.4%
ISAT Science: Change	-2.0%	Low		
ISAT Composite: Percent Meeting/Exceeding Standards	83.9%	High	70.6%	13.3%
ISAT Composite: Change	2.8%	High	2.0%	0.8%
Attendance Rate	95.3%	Middle	94.8%	0.5%
Transfer-out Rate	1.6%	High	9.1%	7.5%

**Office of New Schools - Chicago Public Schools  
2009-10 Performance Report**

<b>School:</b> Chicago International Charter School - Prairie Campus	<b>Academic Status:</b> Making Reasonable Progress
<b>Address:</b> 11530 South Prairie Avenue	<b>Accountability Version:</b> D
<b>Phone:</b> 773.928.0480	<b>Year Opened:</b> 1998
<b>Grades Served:</b> K-8th	<b>Term of Agreement:</b> 2007-2012
	<b>Student Enrollment:</b> 425

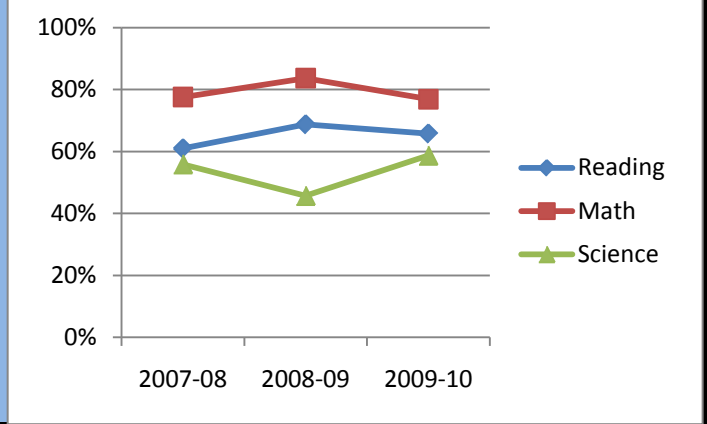
**School Mission:** CICS's mission is to provide, through innovation and choice, an attractive and rigorous college-preparatory education that meets the needs of today's student.

**Demographic Information**

Student Ethnicity	School	District Average
African American	59.8%	45.1%
Hispanic	40.0%	41.9%
White	0.2%	9.2%
Asian/Pacific Islander	0.0%	3.6%
Other	0.0%	0.2%
<b>Other Demographics</b>		
Low-income rate	96.5%	86.9%
Limited English proficiency	17.9%	12.5%
Special Education	7.8%	12.0%
Percentage of Students from Neighborhood	60.7%	

**Test Scores Over Time**

ISAT	2007-08	2008-09	2009-10
<b>Reading</b>	61.0%	68.8%	65.8%
<b>Math</b>	77.6%	83.7%	76.9%
<b>Science</b>	55.9%	45.7%	58.7%



Absolute and Relative Student Performance				
Indicator	Performance	Absolute Rating	Comparison	
			School Average	Difference
Elementary School				
ISAT Reading: Percent Meeting/Exceeding Standards	65.8%	Middle	57.1%	8.7%
ISAT Reading: Change	5.1%	High		
ISAT Math: Percent Meeting/Exceeding Standards	76.9%	High	66.8%	10.1%
ISAT Math: Change	-1.6%	Middle		
ISAT Science: Percent Meeting/Exceeding Standards	58.7%	Middle	53.1%	5.6%
ISAT Science: Change	5.9%	High		
ISAT Composite: Percent Meeting/Exceeding Standards	69.6%	Middle	60.7%	8.9%
ISAT Composite: Change	2.4%	High	3.3%	-0.9%
Attendance Rate	94.7%	Middle	93.3%	1.4%
Transfer-out Rate	4.9%	High	18.7%	13.8%

**Office of New Schools - Chicago Public Schools  
2009-10 Performance Report**

<b>School:</b>	Chicago International Charter School - Washington Park Campus	<b>Academic Status:</b>	Making Reasonable Progress
<b>Address:</b>	6105 South Michigan Avenue	<b>Accountability Version:</b>	D
<b>Phone:</b>	773.324.3300	<b>Year Opened:</b>	2001
<b>Grades Served:</b>	K-8th	<b>Term of Agreement:</b>	2007-2012
		<b>Student Enrollment:</b>	427

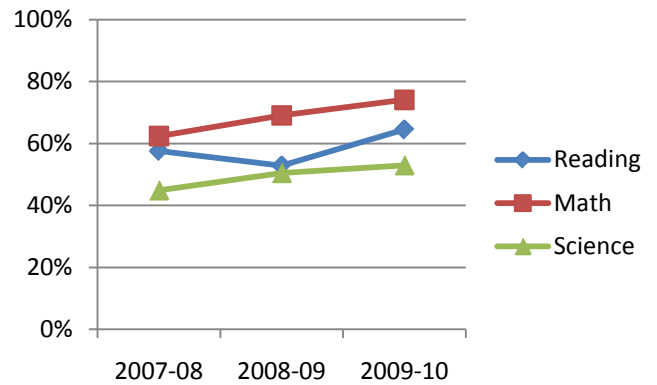
**School Mission:** CICS's mission is to provide, through innovation and choice, an attractive and rigorous college-preparatory education that meets the needs of today's student.

**Demographic Information**

Student Ethnicity	School	District Average
African American	99.8%	45.1%
Hispanic	0.2%	41.9%
White	0.0%	9.2%
Asian/Pacific Islander	0.0%	3.6%
Other	0.0%	0.2%
<b>Other Demographics</b>		
Low-income rate	96.3%	86.9%
Limited English proficiency	0.0%	12.5%
Special Education	8.2%	12.0%
Percentage of Students from Neighborhood	71.0%	

**Test Scores Over Time**

ISAT	2007-08	2008-09	2009-10
<b>Reading</b>	57.6%	52.9%	64.5%
<b>Math</b>	62.4%	69.1%	74.1%
<b>Science</b>	44.9%	50.5%	53.0%



Absolute and Relative Student Performance				
Indicator	Performance	Absolute Rating	Comparison	
			School Average	Difference
Elementary School				
ISAT Reading: Percent Meeting/Exceeding Standards	64.5%	Middle	50.6%	13.9%
ISAT Reading: Change	11.3%	High		
ISAT Math: Percent Meeting/Exceeding Standards	74.1%	High	58.3%	15.8%
ISAT Math: Change	7.2%	High		
ISAT Science: Percent Meeting/Exceeding Standards	53.0%	Middle	43.1%	9.9%
ISAT Science: Change	4.9%	High		
ISAT Composite: Percent Meeting/Exceeding Standards	67.2%	Middle	52.9%	14.3%
ISAT Composite: Change	8.9%	High	2.5%	6.4%
Attendance Rate	94.0%	Middle	92.0%	2.0%
Transfer-out Rate	5.2%	Middle	17.4%	12.2%

**Office of New Schools - Chicago Public Schools  
2009-10 Performance Report**

<b>School:</b>	Chicago International Charter School - West Belden Campus	<b>Academic Status:</b>	Meeting Standards
<b>Address:</b>	2245 North McVicker Avenue	<b>Accountability Version:</b>	D
<b>Phone:</b>	773.637.9430	<b>Year Opened:</b>	2002
<b>Grades Served:</b>	K-8th	<b>Term of Agreement:</b>	2007-2012
		<b>Student Enrollment:</b>	501

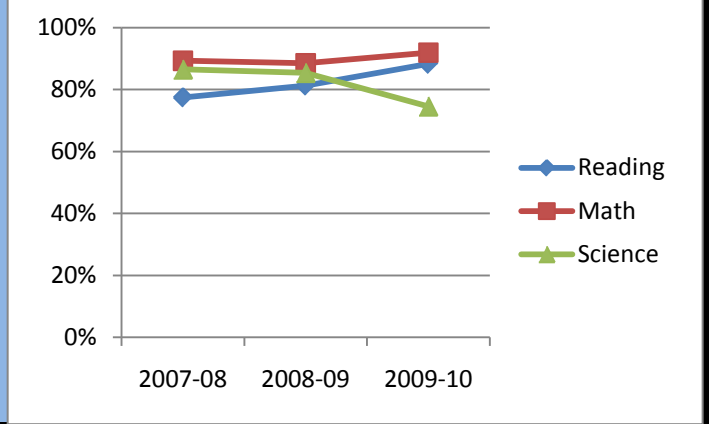
**School Mission:** CICS's mission is to provide, through innovation and choice, an attractive and rigorous college-preparatory education that meets the needs of today's student.

**Demographic Information**

Student Ethnicity	School	District Average
African American	8.8%	45.1%
Hispanic	90.0%	41.9%
White	1.2%	9.2%
Asian/Pacific Islander	0.0%	3.6%
Other	0.0%	0.2%
<b>Other Demographics</b>		
Low-income rate	95.8%	86.9%
Limited English proficiency	41.5%	12.5%
Special Education	9.8%	12.0%
Percentage of Students from Neighborhood	80.6%	

**Test Scores Over Time**

ISAT	2007-08	2008-09	2009-10
<b>Reading</b>	77.5%	81.3%	88.3%
<b>Math</b>	89.3%	88.5%	91.9%
<b>Science</b>	86.5%	85.4%	74.6%



Absolute and Relative Student Performance				
Indicator	Performance	Absolute Rating	Comparison	
			School Average	Difference
Elementary School				
ISAT Reading: Percent Meeting/Exceeding Standards	88.3%	High	65.7%	22.6%
ISAT Reading: Change	12.4%	High		
ISAT Math: Percent Meeting/Exceeding Standards	91.9%	High	77.1%	14.8%
ISAT Math: Change	4.2%	High		
ISAT Science: Percent Meeting/Exceeding Standards	74.6%	High	68.6%	6.0%
ISAT Science: Change	-7.4%	Low		
ISAT Composite: Percent Meeting/Exceeding Standards	88.1%	High	71.0%	17.1%
ISAT Composite: Change	6.3%	High	1.4%	4.9%
Attendance Rate	96.1%	High	95.1%	1.0%
Transfer-out Rate	1.0%	High	7.3%	6.3%

**Office of New Schools - Chicago Public Schools  
2009-10 Performance Report**

<b>School:</b>	Passages Charter School	<b>Academic Status:</b>	Making Reasonable Progress
<b>Address:</b>	1643 West Bryn Mawr Avenue	<b>Accountability Version:</b>	C
<b>Phone:</b>	773.433.3530	<b>Year Opened:</b>	2001
<b>Grades Served:</b>	K-6th	<b>Term of Agreement:</b>	2008-2013
		<b>Student Enrollment:</b>	291

**School**

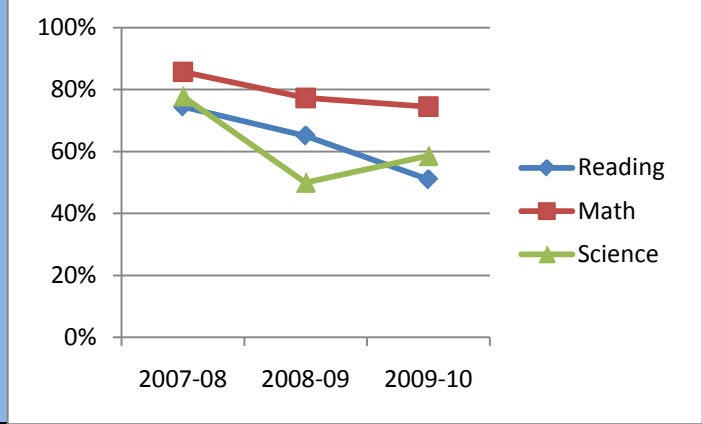
**Mission:** The stated mission of Passages Charter School is to serve the needs of immigrant and refugee students and their families.

**Demographic Information**

Student Ethnicity	School	District Average
African American	54.3%	45.1%
Hispanic	15.1%	41.9%
White	7.9%	9.2%
Asian/Pacific Islander	21.6%	3.6%
Other	0.0%	0.2%
<b>Other Demographics</b>		
Low-income rate	84.2%	86.9%
Limited English proficiency	32.6%	12.5%
Special Education	7.2%	12.0%
Percentage of Students from Neighborhood	35.1%	

**Test Scores Over Time**

ISAT	2007-08	2008-09	2009-10
<b>Reading</b>	74.5%	65.1%	51.0%
<b>Math</b>	85.7%	77.3%	74.5%
<b>Science</b>	77.8%	50.0%	58.6%



Absolute and Relative Student Performance				
Indicator	Performance	Absolute Rating	Comparison	
			School Average	Difference
Elementary School				
ISAT Reading: Percent Meeting/Exceeding Standards	51.0%	Middle	68.2%	-17.2%
ISAT Reading: Change	-22.1%	Low		
ISAT Math: Percent Meeting/Exceeding Standards	74.5%	High	76.4%	-1.9%
ISAT Math: Change	-10.3%	Low		
ISAT Science: Percent Meeting/Exceeding Standards	58.6%	Middle	70.4%	-11.8%
ISAT Science: Change	-13.3%	Low		
ISAT Composite: Percent Meeting/Exceeding Standards	62.2%	Middle	71.9%	-9.7%
ISAT Composite: Change	-15.8%	Low	-0.7%	-15.1%
Attendance Rate	94.7%	Middle	95.4%	-0.7%
Transfer-out Rate	7.7%	Middle	10.8%	3.1%
Schoolwide				
Adequate Yearly Progress	Failed to meet AYP target for 1 year	Middle		

**Office of New Schools - Chicago Public Schools  
2009-10 Performance Report**

<b>School:</b>	Passages Charter School	<b>Academic Status:</b>	Making Reasonable Progress
<b>Address:</b>	1643 West Bryn Mawr Avenue	<b>Accountability Version:</b>	C
<b>Phone:</b>	773.433.3530	<b>Year Opened:</b>	2001
<b>Grades Served:</b>	K-6th	<b>Term of Agreement:</b>	2008-2013
		<b>Student Enrollment:</b>	291

**School Mission:** The stated mission of Passages Charter School is to serve the needs of immigrant and refugee students and their families.

**Financial Management and Compliance**

Indicator	Performance	Rating
Balanced Budget	Projected Surplus FY10; 8% Surplus FY10	High
Financial Practices	No material weaknesses; Obligations current	High
Compliance	No findings	High

**Office of New Schools - Chicago Public Schools  
2009-10 Performance Report**

<b>School:</b>	Plato Learning Academy	<b>Academic Status:</b>	Not Enough Data
<b>Address:</b>	5545 W. Harrison Street	<b>Accountability Version:</b>	E
<b>Phone:</b>	773.413.3090	<b>Year Opened:</b>	2008
<b>Grades Served:</b>	K-6th	<b>Term of Agreement:</b>	2008-2013
		<b>Student Enrollment:</b>	322

**School Mission:** To work collaboratively, think critically and achieve academically in order to promote and nurture a community of life long learners for tomorrow's global society.

**Demographic Information**

<b>Student Ethnicity</b>	<b>School</b>	<b>District Average</b>
African American	99.1%	45.1%
Hispanic	0.6%	41.9%
White	0.3%	9.2%
Asian/Pacific Islander	0.0%	3.6%
Other	0.0%	0.2%
<b>Other Demographics</b>		
Low-income rate	97.5%	86.9%
Limited English proficiency	0.0%	12.5%
Special Education	8.4%	12.0%
Percentage of Students from Neighborhood	81.7%	

**Academic Performance**

[This school is held accountable to the metrics in the CPS Performance, Remediation, and Probation Policy \(PRPP\). To see the 2009-10 performance, please click here.](#)

**Office of New Schools - Chicago Public Schools  
2009-10 Performance Report**

<b>School:</b>	Plato Learning Academy	<b>Academic Status:</b>	Not Enough Data
<b>Address:</b>	5545 W. Harrison Street	<b>Accountability Version:</b>	E
<b>Phone:</b>	773.413.3090	<b>Year Opened:</b>	2008
<b>Grades Served:</b>	K-6th	<b>Term of Agreement:</b>	2008-2013
		<b>Student Enrollment:</b>	322

**School Mission:** To work collaboratively, think critically and achieve academically in order to promote and nurture a community of life long learners for tomorrow's global society.

<b>Financial Management and Compliance</b>		
<b>Category</b>	<b>Indicator</b>	<b>Performance</b>
	Change in Net Assets	3
	Liquidity/Current Ratio	4
	Net Asset Ratio	4
	Loan Delinquency	4
Balanced Budget	Budget	4
	Annual Audit	4
Financial Practices	Reporting and Oversight	4
	Legal Compliance	4
Compliance	CPS/State/Federal Compliance	1
	Budget	4
	Quarterly Statements	4
Reporting	Audit	2